



**SITE INFORMATION**

---

**Closure Report**  
**Nighthawk State Com #001H**  
**Incident ID: nAPP2414369183**  
**Unit D Sec 29 T18S R35E**  
**32.725471°, -103.486557°**  
**Lea County, New Mexico**

**Produced Water Release**

**Point of Release: Equipment failure inside the secondary containment on the flow line**

**Release Date: 05.22.24**

**Volume Released: 9 Barrels of Produced Water**

**Volume Recovered: 9 Barrels of Produced Water**

**CARMONA RESOURCES**



**Prepared for:**  
**Marathon Oil Corporation**  
**990 Town and Country Blvd,**  
**Houston, Texas 77024**

**Prepared by:**  
**Carmona Resources, LLC**  
**310 West Wall Street**  
**Suite 500**  
**Midland, Texas 79701**



July 1, 2024

New Mexico Oil Conservation Division  
 1220 South St, Francis Drive  
 Santa Fe, NM 87505

**Re: Closure Report**  
**Nighthawk State Com 1H**  
**Marathon Oil Corporation**  
**Incident ID: nAPP2414369183**  
**Site Location: Unit D, S29, T18S, R35E**  
**(Lat 32.725471°, Long -103.486557°)**  
**Lea County, New Mexico**

To whom it may concern:

On behalf of Marathon Oil Corporation, Carmona Resources, LLC has prepared this letter to document the Nighthawk State Com #0011H site activities. The site is located at 32.725471°, -103.486557° within Unit D, S29, T18S, R35E, in Lea County, New Mexico (Figures 1 and 2).

### **1.0 Site Information and Background**

Based on the Notice of Release obtained from the New Mexico Oil Conservation Division (NMOCD), the incident was discovered on May 22, 2024, due to equipment failure inside the secondary containment. The incident released approximately nine (9) barrels of produced water, with nine (9) barrels of produced water recovered. All fluids were contained within the lined facility. See Figure 3. The Notice of Release form is attached in Appendix B.

### **2.0 Site Characterization and Groundwater**

The site is located within a low karst area. Based on a review of the New Mexico Office of State Engineers and USGS databases, there is one known water sources within a 0.50-mile radius of the location. The nearest well is located approximately 0.35 miles south of the site in S29, T18S, R35E and was drilled in 1961. The well has a reported groundwater depth of 95' feet below the ground surface (ft bgs). A copy of the associated point of diversion is attached in Appendix C.

On August 15, 2023, Carmona Resources personnel were onsite to drill a groundwater determination bore to 55' bgs, which is approximately 0.44 miles East of the release point. The bore was left open for 72 hours and tagged with a water level meter. No water was detected at 55' below the surface. The coordinates for the groundwater determination bore are 32.726286°, -103.479090°. See Appendix C for the driller's log.

### **3.0 NMAC Regulatory Criteria**

Per the NMOCD regulatory criteria established in 19.15.29.12 NMAC, the following criteria were utilized in assessing the site.

- Benzene: 10 milligrams per kilogram (mg/kg).
- Benzene, toluene, ethylbenzene, and total xylenes (BTEX): 50 mg/kg.
- TPH: 100 mg/kg (GRO + DRO + MRO).
- Chloride: 600 mg/kg.

#### **4.0 Liner Inspection Activities**

On June 5, 2024, Carmona Resources, LLC conducted liner inspection activities to assess the liner's integrity within the facility. Prior to the liner inspection, the NMOCD division office was notified via web portal on June 2, 2024, per Subsection D of 19.15.29.12 NMAC. See Appendix B. Carmona Resources, LLC personnel inspected the liner visually and found it to be intact with no integrity issues. Refer to the Photolog listed in Appendix A.

#### **5.0 Conclusions**

Based on the liner inspection throughout the facility, no further actions are required at the site. The final C-141 is attached, and Marathon formally requests the closure of the spill. If you have any questions regarding this report or need additional information, please contact us at 432-813-1992.

Sincerely,

**Carmona Resources, LLC**



Clinton Merritt  
Sr. Project Manager

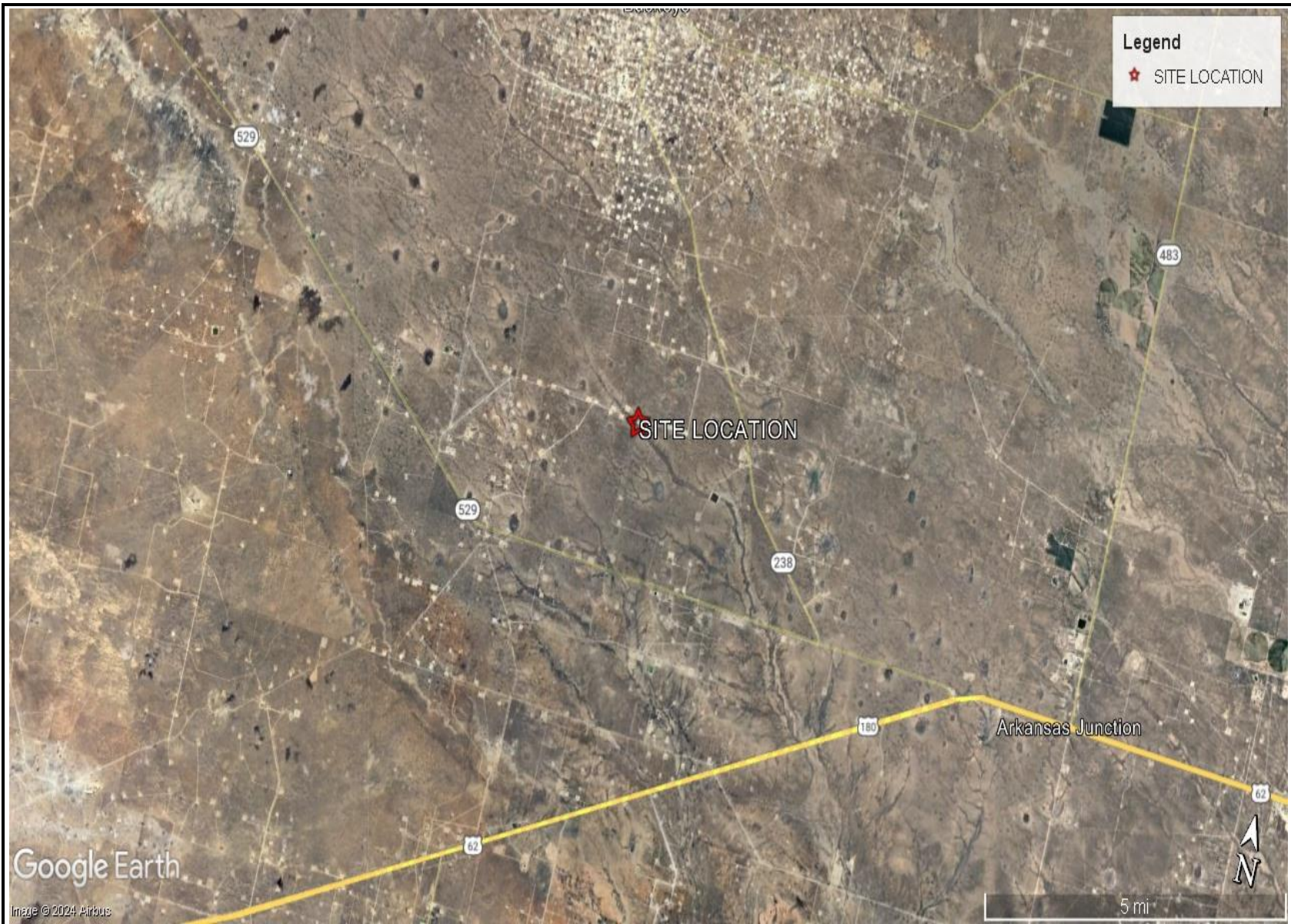


Ashton Thielke  
Sr. Project Manager

# FIGURES

CARMONA RESOURCES

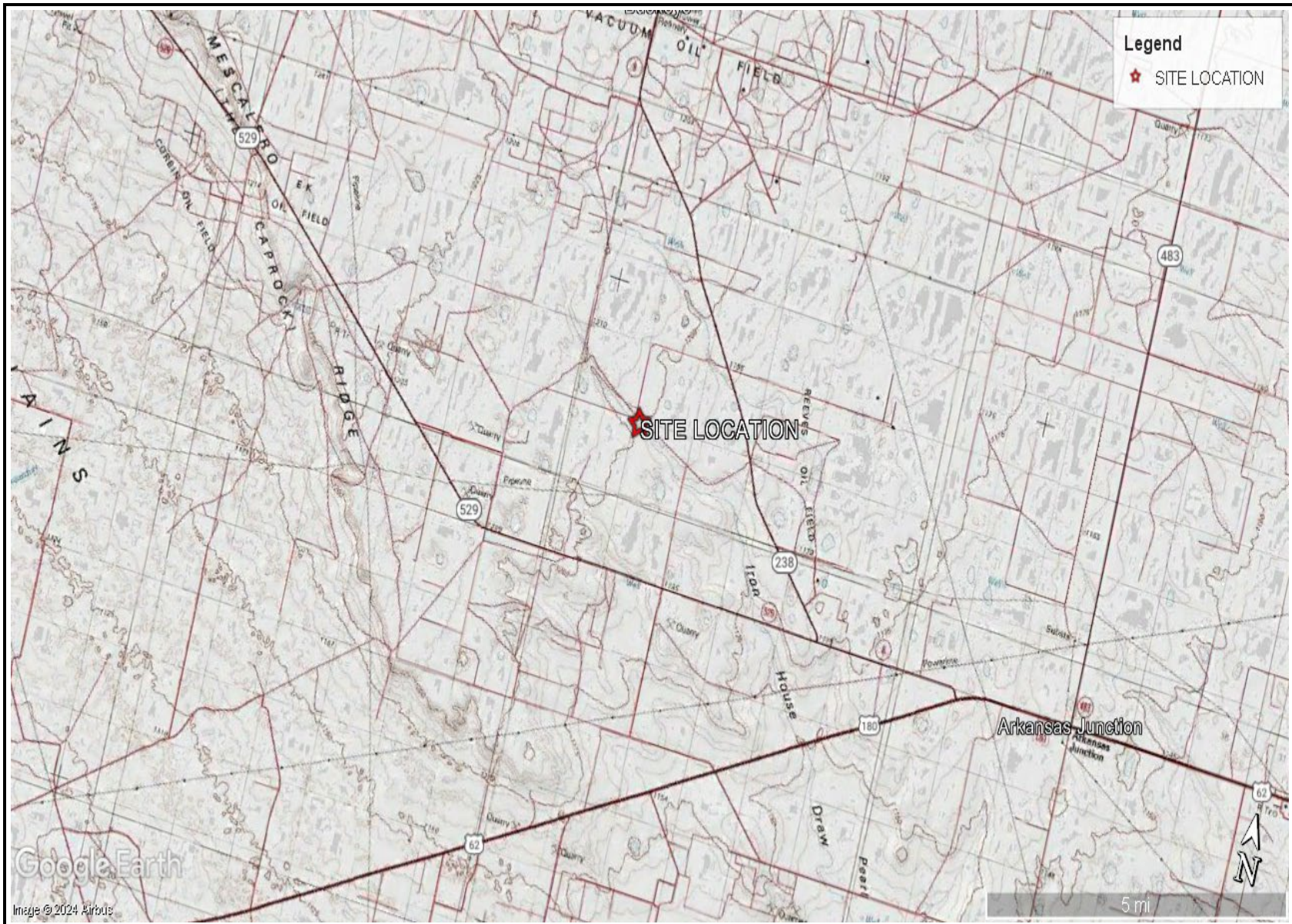




OVERVIEW MAP  
 MARATHON OIL CORPORATION  
 NIGHTHAWK STATE COM 1H  
 LEA COUNTY, NEW MEXICO  
 32.725471°, -103.486557°



FIGURE 1



TOPOGRAPHIC MAP  
 MARATHON OIL CORPORATION  
 NIGHTHAWK STATE COM #001H  
 LEA COUNTY, NEW MEXICO  
 32.725471°, -103.486557°



FIGURE 2



SECONDARY CONTAINMENT MAP  
 MARATHON OIL CORPORATION  
 NIGHTHAWK STATE COM #001H  
 LEA COUNTY, NEW MEXICO  
 32.725471°, -103.486557°



FIGURE 3

# APPENDIX A

CARMONA RESOURCES



# PHOTOGRAPHIC LOG

## Marathon Oil Corporation

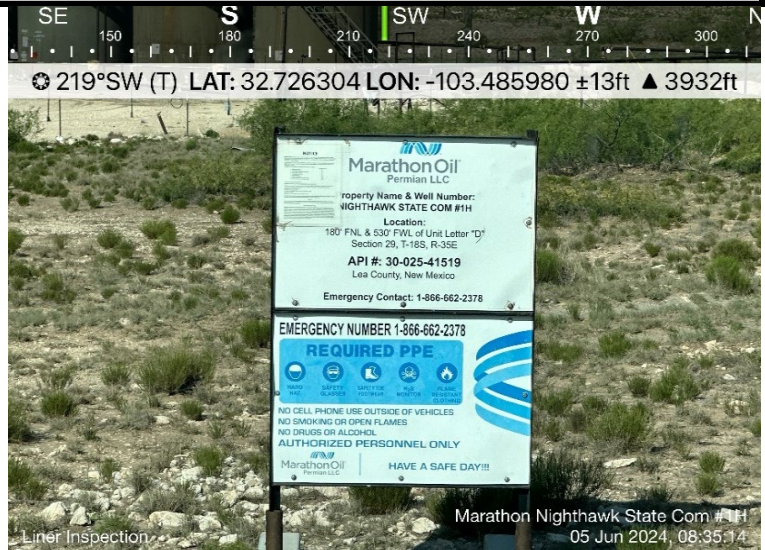
### Photograph No. 1

**Facility:** Nighthawk State Com #001H

**County:** Lea County, New Mexico

**Description:**

View Southwest of facility sign.



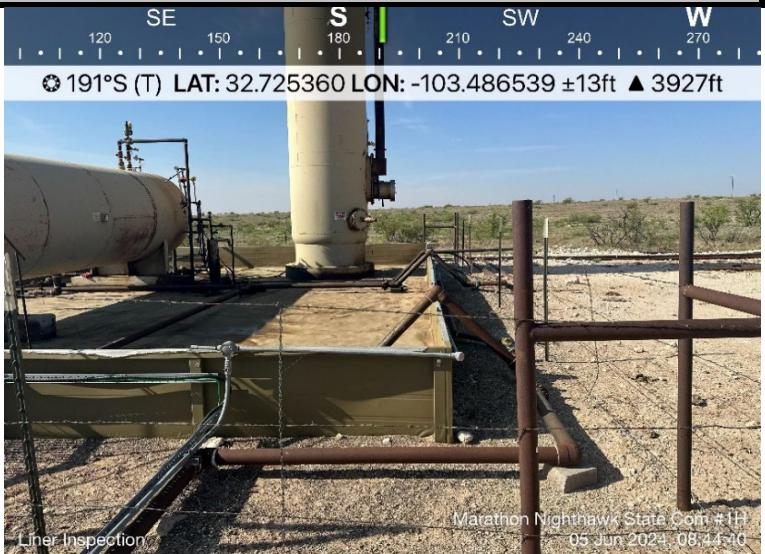
### Photograph No. 2

**Facility:** Nighthawk State Com #001H

**County:** Lea County, New Mexico

**Description:**

View South of lined facility.



### Photograph No. 3

**Facility:** Nighthawk State Com #001H

**County:** Lea County, New Mexico

**Description:**

View Southeast of lined facility.



# PHOTOGRAPHIC LOG

Marathon Oil Corporation

## Photograph No. 4

Facility: Nighthawk State Com #001H

County: Lea County, New Mexico

### Description:

View North of lined facility.



## Photograph No. 5

Facility: Nighthawk State Com #001H

County: Lea County, New Mexico

### Description:

View South of lined facility.



## Photograph No. 6

Facility: Nighthawk State Com #001H

County: Lea County, New Mexico

### Description:

View Northwest of lined facility.



# PHOTOGRAPHIC LOG

Marathon Oil Corporation

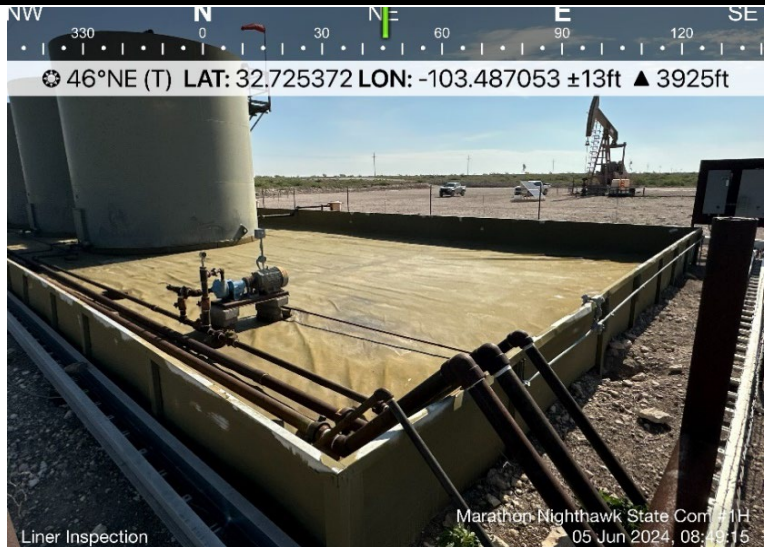
## Photograph No. 7

Facility: Nighthawk State Com #001H

County: Lea County, New Mexico

### Description:

View Northeast of lined facility.



## Photograph No. 8

Facility: Nighthawk State Com #001H

County: Lea County, New Mexico

### Description:

View Northeast of lined facility.



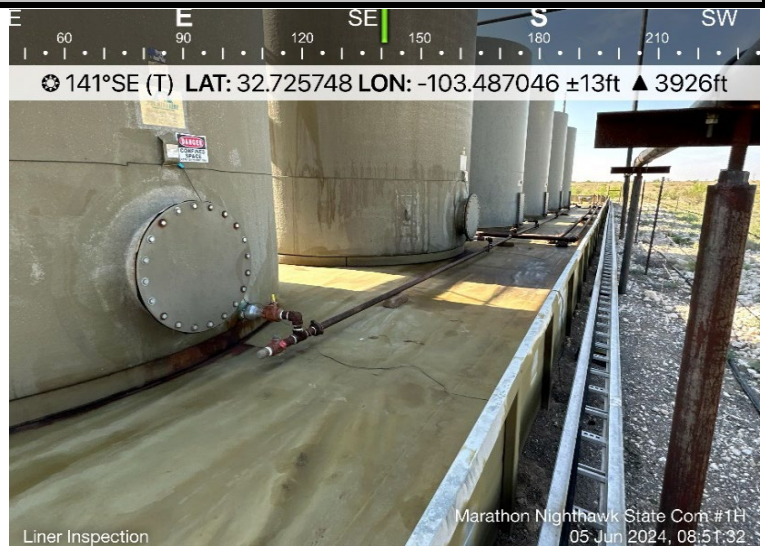
## Photograph No. 9

Facility: Nighthawk State Com #001H

County: Lea County, New Mexico

### Description:

View Southeast of lined facility.



# PHOTOGRAPHIC LOG

Marathon Oil Corporation

## Photograph No. 10

Facility: Nighthawk State Com #001H

County: Lea County, New Mexico

### Description:

View Southwest of lined facility.



## Photograph No. 11

Facility: Nighthawk State Com #001H

County: Lea County, New Mexico

### Description:

View Northwest of lined facility.



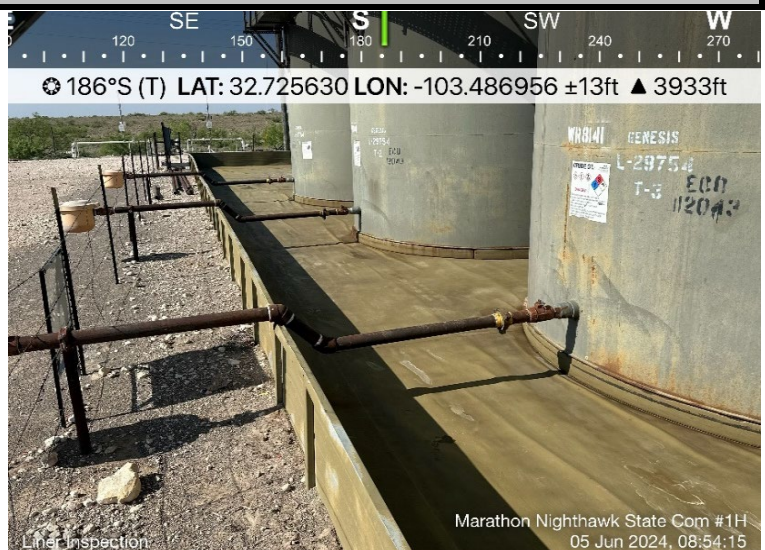
## Photograph No. 12

Facility: Nighthawk State Com #001H

County: Lea County, New Mexico

### Description:

View South of lined facility.



## APPENDIX B

CARMONA RESOURCES



**District I**  
 1625 N. French Dr., Hobbs, NM 88240  
 Phone:(575) 393-6161 Fax:(575) 393-0720  
**District II**  
 811 S. First St., Artesia, NM 88210  
 Phone:(575) 748-1283 Fax:(575) 748-9720  
**District III**  
 1000 Rio Brazos Rd., Aztec, NM 87410  
 Phone:(505) 334-6178 Fax:(505) 334-6170  
**District IV**  
 1220 S. St Francis Dr., Santa Fe, NM 87505  
 Phone:(505) 476-3470 Fax:(505) 476-3462

**State of New Mexico**  
**Energy, Minerals and Natural Resources**  
**Oil Conservation Division**  
**1220 S. St Francis Dr.**  
**Santa Fe, NM 87505**

QUESTIONS

Action 347010

**QUESTIONS**

Operator: MARATHON OIL PERMIAN LLC 990 Town & Country Blvd. Houston, TX 77024	OGRID: 372098
	Action Number: 347010
	Action Type: [NOTIFY] Notification Of Release (NOR)

**QUESTIONS**

<b>Location of Release Source</b>	
<i>Please answer all the questions in this group.</i>	
Site Name	NIGHTHAWK STATE COM #001H
Date Release Discovered	05/22/2024
Surface Owner	State

<b>Incident Details</b>	
<i>Please answer all the questions in this group.</i>	
Incident Type	Produced Water Release
Did this release result in a fire or is the result of a fire	No
Did this release result in any injuries	No
Has this release reached or does it have a reasonable probability of reaching a watercourse	No
Has this release endangered or does it have a reasonable probability of endangering public health	No
Has this release substantially damaged or will it substantially damage property or the environment	No
Is this release of a volume that is or may with reasonable probability be detrimental to fresh water	No

<b>Nature and Volume of Release</b>	
<i>Material(s) released, please answer all that apply below. Any calculations or specific justifications for the volumes provided should be attached to the follow-up C-141 submission.</i>	
Crude Oil Released (bbls) Details	Not answered.
Produced Water Released (bbls) Details	Cause: Equipment Failure   Flow Line - Production   Produced Water   Released: 9 BBL   Recovered: 9 BBL   Lost: 0 BBL.
Is the concentration of chloride in the produced water >10,000 mg/l	Yes
Condensate Released (bbls) Details	Not answered.
Natural Gas Vented (Mcf) Details	Not answered.
Natural Gas Flared (Mcf) Details	Not answered.
Other Released Details	Not answered.
Are there additional details for the questions above (i.e. any answer containing Other, Specify, Unknown, and/or Fire, or any negative lost amounts)	Not answered.

**District I**  
1625 N. French Dr., Hobbs, NM 88240  
Phone:(575) 393-6161 Fax:(575) 393-0720

**District II**  
811 S. First St., Artesia, NM 88210  
Phone:(575) 748-1283 Fax:(575) 748-9720

**District III**  
1000 Rio Brazos Rd., Aztec, NM 87410  
Phone:(505) 334-6178 Fax:(505) 334-6170

**District IV**  
1220 S. St Francis Dr., Santa Fe, NM 87505  
Phone:(505) 476-3470 Fax:(505) 476-3462

**State of New Mexico**  
**Energy, Minerals and Natural Resources**  
**Oil Conservation Division**  
**1220 S. St Francis Dr.**  
**Santa Fe, NM 87505**

QUESTIONS, Page 2

Action 347010

**QUESTIONS (continued)**

Operator: MARATHON OIL PERMIAN LLC 990 Town & Country Blvd. Houston, TX 77024	OGRID: 372098
	Action Number: 347010
	Action Type: [NOTIFY] Notification Of Release (NOR)

**QUESTIONS**

<b>Nature and Volume of Release (continued)</b>	
Is this a gas only submission (i.e. only significant Mcf values reported)	<b>No, according to supplied volumes this does not appear to be a "gas only" report.</b>
Was this a major release as defined by Subsection A of 19.15.29.7 NMAC	<b>No</b>
Reasons why this would be considered a submission for a notification of a major release	<i>Unavailable.</i>

*With the implementation of the 19.15.27 NMAC (05/25/2021), venting and/or flaring of natural gas (i.e. gas only) are to be submitted on the C-129 form.*

**Initial Response**

*The responsible party must undertake the following actions immediately unless they could create a safety hazard that would result in injury.*

The source of the release has been stopped	<b>True</b>
The impacted area has been secured to protect human health and the environment	<b>True</b>
Released materials have been contained via the use of berms or dikes, absorbent pads, or other containment devices	<b>True</b>
All free liquids and recoverable materials have been removed and managed appropriately	<b>True</b>
If all the actions described above have not been undertaken, explain why	<i>Not answered.</i>

*Per Paragraph 4 of Subsection B of 19.15.29.8 NMAC the responsible party may commence remediation immediately after discovery of a release. If remediation has begun, please prepare and attach a narrative of actions to date in the follow-up C-141 submission. If remedial efforts have been successfully completed or if the release occurred within a lined containment area (see 19.15.29.11(A)(5)(a) NMAC), please prepare and attach all information needed for closure evaluation in the follow-up C-141 submission.*

**District I**  
 1625 N. French Dr., Hobbs, NM 88240  
 Phone:(575) 393-6161 Fax:(575) 393-0720  
**District II**  
 811 S. First St., Artesia, NM 88210  
 Phone:(575) 748-1283 Fax:(575) 748-9720  
**District III**  
 1000 Rio Brazos Rd., Aztec, NM 87410  
 Phone:(505) 334-6178 Fax:(505) 334-6170  
**District IV**  
 1220 S. St Francis Dr., Santa Fe, NM 87505  
 Phone:(505) 476-3470 Fax:(505) 476-3462

**State of New Mexico**  
**Energy, Minerals and Natural Resources**  
**Oil Conservation Division**  
**1220 S. St Francis Dr.**  
**Santa Fe, NM 87505**

ACKNOWLEDGMENTS

Action 347010

**ACKNOWLEDGMENTS**

Operator: MARATHON OIL PERMIAN LLC 990 Town & Country Blvd. Houston, TX 77024	OGRID: 372098
	Action Number: 347010
	Action Type: [NOTIFY] Notification Of Release (NOR)

**ACKNOWLEDGMENTS**

<input checked="" type="checkbox"/>	I acknowledge that I am authorized to submit notification of a release on behalf of my operator.
<input checked="" type="checkbox"/>	I acknowledge that upon submitting this application, I will be creating a new incident file (assigned to my operator) to track the notification(s) and corrective action(s) for a release, pursuant to NMAC 19.15.29.
<input checked="" type="checkbox"/>	I acknowledge that creating a new incident file will require my operator to file subsequent submission(s) of form "C-141, Application for administrative approval of a release notification and corrective action", pursuant to NMAC 19.15.29.
<input checked="" type="checkbox"/>	I hereby certify that the information given above is true and complete to the best of my knowledge and understand that pursuant to OCD rules and regulations all operators are required to report and/or file certain release notifications and perform corrective actions for releases which may endanger public health or the environment.
<input checked="" type="checkbox"/>	I acknowledge the fact that the acceptance of a C-141 report by the OCD does not relieve the operator of liability should their operations have failed to adequately investigate and remediate contamination that pose a threat to groundwater, surface water, human health or the environment.
<input checked="" type="checkbox"/>	I acknowledge the fact that, in addition, OCD acceptance of a C-141 report does not relieve the operator of responsibility for compliance with any other federal, state, or local laws and/or regulations.

**District I**  
 1625 N. French Dr., Hobbs, NM 88240  
 Phone:(575) 393-6161 Fax:(575) 393-0720

**District II**  
 811 S. First St., Artesia, NM 88210  
 Phone:(575) 748-1283 Fax:(575) 748-9720

**District III**  
 1000 Rio Brazos Rd., Aztec, NM 87410  
 Phone:(505) 334-6178 Fax:(505) 334-6170

**District IV**  
 1220 S. St Francis Dr., Santa Fe, NM 87505  
 Phone:(505) 476-3470 Fax:(505) 476-3462

**State of New Mexico**  
**Energy, Minerals and Natural Resources**  
**Oil Conservation Division**  
**1220 S. St Francis Dr.**  
**Santa Fe, NM 87505**

CONDITIONS

Action 347010

**CONDITIONS**

Operator: MARATHON OIL PERMIAN LLC 990 Town & Country Blvd. Houston, TX 77024	OGRID: 372098
	Action Number: 347010
	Action Type: [NOTIFY] Notification Of Release (NOR)

**CONDITIONS**

Created By	Condition	Condition Date
icastro	When submitting future reports regarding this release, please submit the calculations used or specific justification for the volumes reported on the initial C-141.	5/22/2024

# OCD Permitting

Home Operator Data Action Status Action Search Results Action Status Item Details

## [C-141] Initial C-141 (C-141-V-INITIAL) Application

### Submission Information

Submission ID:	348658	Districts:	Hobbs
Operator:	<a href="#">[372098]</a> MARATHON OIL PERMIAN LLC	Counties:	Lea
Description:	MARATHON OIL PERMIAN LLC [372098] , NIGHTHAWK STATE COM #001H , nAPP2414369183		
Status:	APPROVED		
Status Date:	06/12/2024		
References (2):	30-025-41519, nAPP2414369183		

### Forms

Attachments: [Volume Calculation](#)

### Questions

#### Prerequisites

Incident ID (n#)	nAPP2414369183
Incident Name	NAPP2414369183 NIGHTHAWK STATE COM #001H @ 30-025-41519
Incident Type	Produced Water Release
Incident Status	Initial C-141 Received
Incident Well	[30-025-41519] NIGHTHAWK STATE COM #001H

#### Location of Release Source

Please answer all the questions in this group.

Site Name	NIGHTHAWK STATE COM #001H
Date Release Discovered	05/22/2024
Surface Owner	State

#### Incident Details

Please answer all the questions in this group.

Incident Type	Produced Water Release
Did this release result in a fire or is the result of a fire	No
Did this release result in any injuries	No
Has this release reached or does it have a reasonable probability of reaching a watercourse	No
Has this release endangered or does it have a reasonable probability of endangering public health	No
Has this release substantially damaged or will it substantially damage property or the environment	No
Is this release of a volume that is or may with reasonable probability be detrimental to fresh water	No

#### Nature and Volume of Release

Material(s) released, please answer all that apply below. Any calculations or specific justifications for the volumes provided should be attached to the follow-up C-141 submission.

Crude Oil Released (bbls) Details	Not answered.
-----------------------------------	---------------

Other Released Details **Not answered.**

Are there **additional details** for the questions above (i.e. any answer containing Other, Specify, Unknown, and/or Fire, or any negative lost amounts) **Leak caused by a pinhole developed on the water line leading up to the water tanks.**

**Nature and Volume of Release (continued)**

Is this a gas only submission (i.e. only significant Mcf values reported) **No, according to supplied volumes this does not appear to be a "gas only" report.**

Was this a major release as defined by Subsection A of 19.15.29.7 NMAC **No**

Reasons why this would be considered a submission for a notification of a major release **Unavailable.**

*With the implementation of the 19.15.27 NMAC (05/25/2021), venting and/or flaring of natural gas (i.e. gas only) are to be submitted on the C-129 form.*

**Initial Response**

*The responsible party must undertake the following actions immediately unless they could create a safety hazard that would result in injury.*

The source of the release has been stopped **True**

The impacted area has been secured to protect human health and the environment **True**

Released materials have been contained via the use of berms or dikes, absorbent pads, or other containment devices **True**

All free liquids and recoverable materials have been removed and managed appropriately **True**

If all the actions described above have not been undertaken, explain why **Not answered.**

*Per Paragraph (4) of Subsection B of 19.15.29.8 NMAC the responsible party may commence remediation immediately after discovery of a release. If remediation has begun, please prepare and attach a narrative of actions to date in the follow-up C-141 submission. If remedial efforts have been successfully completed or if the release occurred within a lined containment area (see Subparagraph (a) of Paragraph (5) of Subsection A of 19.15.29.11 NMAC), please prepare and attach all information needed for closure evaluation in the follow-up C-141 submission.*

I hereby certify that the information given above is true and complete to the best of my knowledge and understand that pursuant to OCD rules and regulations all operators are required to report and/or file certain release notifications and perform corrective actions for releases which may endanger public health or the environment. The acceptance of a C-141 report by the OCD does not relieve the operator of liability should their operations have failed to adequately investigate and remediate contamination that pose a threat to groundwater, surface water, human health or the environment. In addition, OCD acceptance of a C-141 report does not relieve the operator of responsibility for compliance with any other federal, state, or local laws and/or regulations.

I hereby agree and sign off to the above statement **Name: Isaac Castro**  
**Email: icastro@marathonoil.com**  
**Date: 06/12/2024**

**Site Characterization**

*Please answer all the questions in this group (only required when seeking remediation plan approval and beyond). This information must be provided to the appropriate district office no later than 90 days after the release discovery date.*

What is the shallowest depth to groundwater beneath the area affected by the release in feet below ground surface (ft bgs) **Not answered.**

What method was used to determine the depth to ground water **Not answered.**

Did this release impact groundwater or surface water **Not answered.**

**What is the minimum distance, between the closest lateral extents of the release and the following surface areas:**

A continuously flowing watercourse or any other significant watercourse **Not answered.**

Any lakebed, sinkhole, or playa lake (measured from the ordinary high-water mark) **Not answered.**

An occupied permanent residence, school, hospital, institution, or church **Not answered.**

A spring or a private domestic fresh water well used by less than five households for domestic or stock watering purposes **Not answered.**

Any other fresh water well or spring **Not answered.**

Incorporated municipal boundaries or a defined municipal fresh water well field **Not answered.**

A wetland **Not answered.**

A subsurface mine **Not answered.**

An (non-karst) unstable area **Not answered.**

Categorize the risk of this well / site being in a karst geology **Not answered.**

A 100-year floodplain **Not answered.**

Did the release impact areas not on an exploration, development, production, or storage site **Not answered.**

**Remediation Plan**

*Please answer all the questions that apply or are indicated. This information must be provided to the appropriate district office no later than 90 days after the release discovery date.*

Requesting a remediation plan approval with this submission **No**

*The OCD recognizes that proposed remediation measures may have to be minimally adjusted in accordance with the physical realities encountered during remediation. If the responsible party has any need to significantly deviate from the remediation plan proposed, then it should consult with the division to determine if another remediation plan submission is required.*

Comments

No comments found for this submission.

Conditions

Summary: *scott.rodgers (6/12/2024), None*

Reasons

No reasons found for this submission.

Fees

Summary:		Created	Type	Amount	Status	Saved
NGQH9-240529-C-1410	Fee	5/29/2024	SB553 A.(2) [ADMIN]	\$150.00	Paid [PAID]	5/29/2024
	Payment	6/12/2024	Credit Card [CC]	\$150.00	Paid [PAID]	6/12/2024

Go Back

**District I**  
 1625 N. French Dr., Hobbs, NM 88240  
 Phone:(575) 393-6161 Fax:(575) 393-0720  
**District II**  
 811 S. First St., Artesia, NM 88210  
 Phone:(575) 748-1283 Fax:(575) 748-9720  
**District III**  
 1000 Rio Brazos Rd., Aztec, NM 87410  
 Phone:(505) 334-6178 Fax:(505) 334-6170  
**District IV**  
 1220 S. St Francis Dr., Santa Fe, NM 87505  
 Phone:(505) 476-3470 Fax:(505) 476-3462

**State of New Mexico**  
**Energy, Minerals and Natural Resources**  
**Oil Conservation Division**  
**1220 S. St Francis Dr.**  
**Santa Fe, NM 87505**

QUESTIONS

Action 350024

**QUESTIONS**

Operator: MARATHON OIL PERMIAN LLC 990 Town & Country Blvd. Houston, TX 77024	OGRID: 372098
	Action Number: 350024
	Action Type: [NOTIFY] Notification Of Liner Inspection (C-141L)

**QUESTIONS**

<b>Prerequisites</b>	
Incident ID (n#)	nAPP2414369183
Incident Name	NAPP2414369183 NIGHTHAWK STATE COM #001H @ 30-025-41519
Incident Type	Produced Water Release
Incident Status	Notification Accepted
Incident Well	[30-025-41519] NIGHTHAWK STATE COM #001H

<b>Location of Release Source</b>	
Site Name	NIGHTHAWK STATE COM #001H
Date Release Discovered	05/22/2024
Surface Owner	State

<b>Liner Inspection Event Information</b>	
<i>Please answer all the questions in this group.</i>	
What is the liner inspection surface area in square feet	5,204
Have all the impacted materials been removed from the liner	Yes
Liner inspection date pursuant to Subparagraph (a) of Paragraph (5) of Subsection A of 19.15.29.11 NMAC	06/05/2024
Time liner inspection will commence	08:00 AM
Please provide any information necessary for observers to liner inspection	Clinton Merritt 432-813-9044
Please provide any information necessary for navigation to liner inspection site	From the intersection of NM 529 and NM 238, turn north onto NM 238 and travel 3.82 miles. Turn west onto unmarked lease road and travel 0.42 miles. Turn south onto unmarked lease road and travel 1.01 miles. turn west onto unmarked lease road and travel 0.78 miles. Battery is on the immediate south side of the lease road.

**District I**  
 1625 N. French Dr., Hobbs, NM 88240  
 Phone:(575) 393-6161 Fax:(575) 393-0720

**District II**  
 811 S. First St., Artesia, NM 88210  
 Phone:(575) 748-1283 Fax:(575) 748-9720

**District III**  
 1000 Rio Brazos Rd., Aztec, NM 87410  
 Phone:(505) 334-6178 Fax:(505) 334-6170

**District IV**  
 1220 S. St Francis Dr., Santa Fe, NM 87505  
 Phone:(505) 476-3470 Fax:(505) 476-3462

**State of New Mexico**  
**Energy, Minerals and Natural Resources**  
**Oil Conservation Division**  
**1220 S. St Francis Dr.**  
**Santa Fe, NM 87505**

CONDITIONS

Action 350024

**CONDITIONS**

Operator: MARATHON OIL PERMIAN LLC 990 Town & Country Blvd. Houston, TX 77024	OGRID: 372098
	Action Number: 350024
	Action Type: [NOTIFY] Notification Of Liner Inspection (C-141L)

**CONDITIONS**

Created By	Condition	Condition Date
icastro	Failure to notify the OCD of liner inspections including any changes in date/time per the requirements of 19.15.29.11.A(5)(a)(ii) NMAC, may result in the inspection not being accepted.	6/3/2024

## APPENDIX C

CARMONA RESOURCES

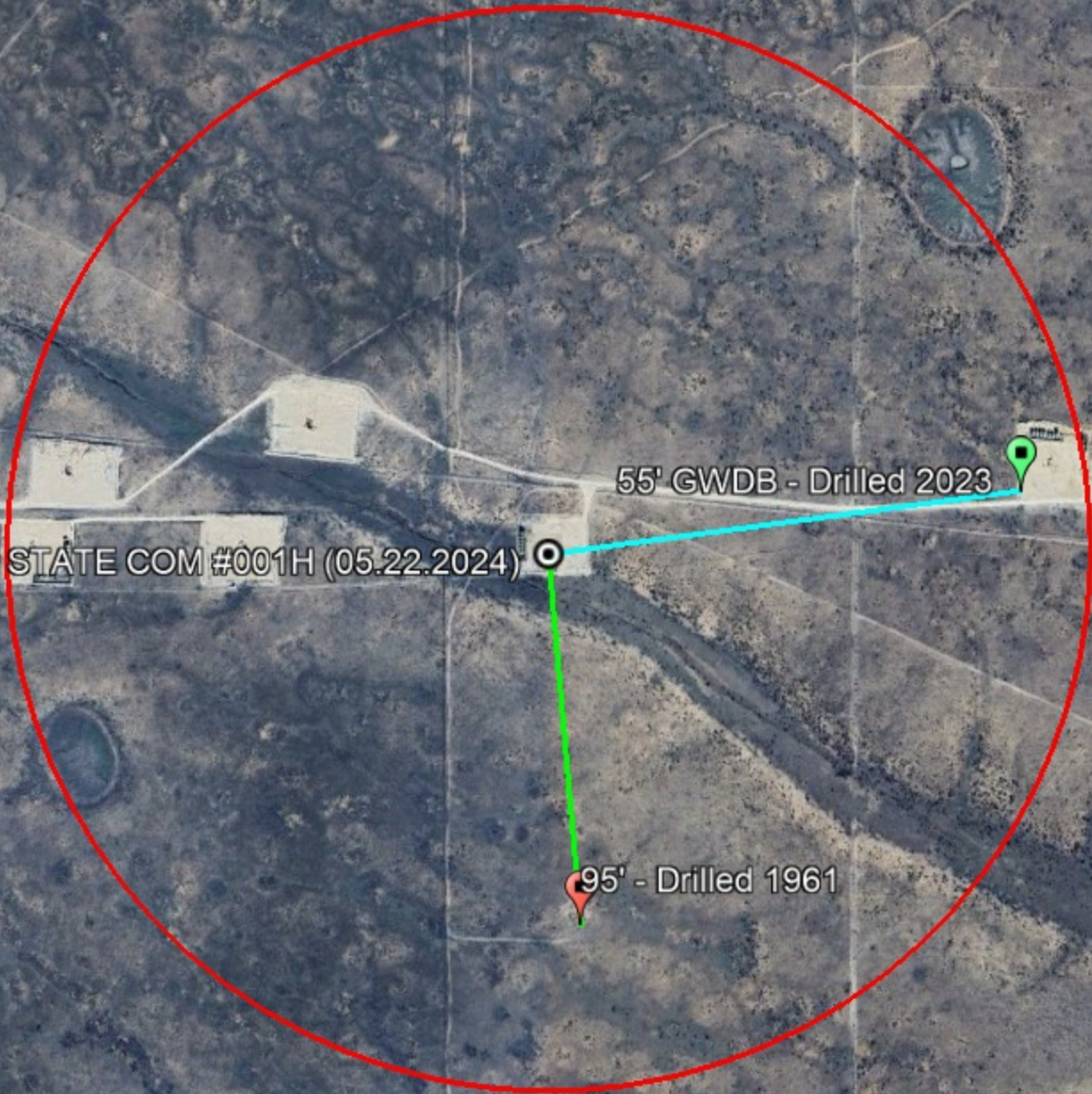


# Nearest Water Well

Marathon Oil Permian LLC

**Legend**

- 0.35 Miles
- 0.44 Miles
- 0.50 Mile Radius
- Groundwater Determination Bore
- NIGHTHAWK STATE COM #001H (05.22.2024)
- NMSEO Water Well



NIGHTHAWK STATE COM #001H (05.22.2024)

55' GWDB - Drilled 2023

95' - Drilled 1961



NIGHTHAWK STATE COM #001H (05.22.2024) ●





# New Mexico Office of the State Engineer

## Water Column/Average Depth to Water

(A CLW##### in the POD suffix indicates the POD has been replaced & no longer serves a water right file.)

(R=POD has been replaced, O=orphaned, C=the file is closed)

(quarters are 1=NW 2=NE 3=SW 4=SE)  
(quarters are smallest to largest)

(NAD83 UTM in meters)

(In feet)

POD Number	POD Sub-Code	basin	County	Q 64	Q 16	Q 4	Sec	Tws	Rng	X	Y	Distance	Depth Well	Depth Water	Water Column
<a href="#">L 04562</a>	L	LE		3	1	29	18S	35E		641874	3621315*	553	156	95	61
<a href="#">L 02053</a>	L	LE				20	18S	35E		642464	3622723*	1070	175	78	97
<a href="#">L 07928</a>	L	LE		4	4	1	19	18S	35E	640639	3622915	1581	175		
<a href="#">L 02357</a>	L	LE				2	20	18S	35E	642855	3623137*	1637	170	77	93
<a href="#">L 03171</a>	L	LE		3	3	17	18S	35E		641835	3623734*	1868	170	150	20
<a href="#">L 03888</a>	L	LE		3	1	19	18S	35E		640253	3622912*	1885	107	70	37
<a href="#">L 12926 POD1</a>	L	LE		2	2	3	25	18S	34E	639839	3621631	1996	182	117	65
<a href="#">L 15235 POD1</a>	L	LE		2	4	1	31	18S	35E	640696	3619795	2356	162	75	87
<a href="#">L 03721</a>	L	LE		3	3	18	18S	35E		640241	3623717*	2434	161	90	71
<a href="#">L 09742</a>	L	LE		1	4	17	18S	35E		642474	3624312	2531	200		
<a href="#">L 02052</a>	L	LE				17	18S	35E		642438	3624337*	2546	190	72	118
<a href="#">L 05156</a>	L	LE		4	1	17	18S	35E		642224	3624545*	2708	150	90	60
<a href="#">L 02680</a>	L	LE		1	2	21	18S	35E		644257	3623357*	2855	190	59	131
<a href="#">L 02679</a>	L	LE		4	4	21	18S	35E		644680	3622151*	2872	200	68	132
<a href="#">L 02679</a>	R	L	LE	4	4	21	18S	35E		644680	3622151*	2872	200	68	132
<a href="#">L 05444</a>	L	LE		4	3	32	18S	35E		642319	3618899*	3008	80	58	22
<a href="#">L 09588</a>	L	LE		4	3	4	16	18S	35E	644349	3623659*	3098	155	84	71
<a href="#">L 03772</a>	L	LE		2	2	21	18S	35E		644659	3623361*	3206	130	60	70
<a href="#">L 00493</a>	L	LE		1	2	1	05	19S	35E	642290	3618663	3236	100		
<a href="#">L 03866</a>	L	LE		3	3	22	18S	35E		645082	3622155*	3272	127	65	62
<a href="#">L 04399</a>	L	LE		3	3	22	18S	35E		645082	3622155*	3272	90	75	15
<a href="#">L 14371 POD1</a>	L	LE		1	1	2	05	19S	35E	642616	3618661	3301	172	60	112
<a href="#">L 14200 POD1</a>	L	LE		2	2	2	05	19S	35E	642952	3618657	3402	180	60	120
<a href="#">L 09762</a>	L	LE		3	3	33	18S	35E		643526	3618913*	3409	160	80	80
<a href="#">L 14200 POD2</a>	L	LE		2	2	2	05	19S	35E	643291	3618631	3552	180	60	120
<a href="#">L 09767</a>	L	LE		3	3	13	18S	34E		638636	3623688*	3670	182	96	86

\*UTM location was derived from PLSS - see Help

(A CLW##### in the POD suffix indicates the POD has been replaced & no longer serves a water right file.)

(R=POD has been replaced, O=orphaned, C=the file is closed)

(quarters are 1=NW 2=NE 3=SW 4=SE)

(quarters are smallest to largest) (NAD83 UTM in meters)

(In feet)

POD Number	POD Sub-Code	basin	County	Q 6	Q 16	Q 4	Sec	Tws	Rng	X	Y	Distance	Depth Well	Depth Water	Water Column
<a href="#">L 05810</a>	L	LE		2	3	22	18S	35E		645479	3622564*	3723	145	95	50
<a href="#">L 04794</a>	L	LE			4	07	18S	35E		641200	3625540*	3726	150	95	55
<a href="#">L 02349 POD3</a>	L	LE		4	1	4	07	18S	35E	641225	3625573	3755	220	142	78
<a href="#">L 02350</a>	L	LE		4	1	3	08	18S	35E	641897	3625650*	3784	216	105	111
<a href="#">L 05172</a>	L	LE			3	3	07	18S	35E	640214	3625331*	3819	161	85	76
<a href="#">L 06047</a>	L	LE		2	2	1	16	18S	35E	643927	3625066*	3830	122	65	57
<a href="#">L 02349 POD2</a>	L	LE		4	1	4	07	18S	35E	641091	3625641*	3845	214	85	129
<a href="#">L 02349</a>	R	L	LE	3	1	4	07	18S	35E	640891	3625641*	3888	207	85	122
<a href="#">L 09428</a>	L	LE		3	4	1	05	19S	35E	642231	3617997*	3890	130		
<a href="#">L 04906</a>	L	LE			3	07	18S	35E		640415	3625532*	3926	155	87	68
<a href="#">L 02676</a>	L	LE		1	2	16	18S	35E		644231	3624972*	3930	175	60	115
<a href="#">L 03783</a>	L	LE				27	18S	35E		645710	3621138*	3955	115	65	50

Average Depth to Water: **81 feet**

Minimum Depth: **58 feet**

Maximum Depth: **150 feet**

Record Count: 38

**UTMNAD83 Radius Search (in meters):**

**Easting (X):** 641822

**Northing (Y):** 3621866

**Radius:** 4000

\*UTM location was derived from PLSS - see Help

The data is furnished by the NMOSE/ISC and is accepted by the recipient with the expressed understanding that the OSE/ISC make no warranties, expressed or implied, concerning the accuracy, completeness, reliability, usability, or suitability for any particular purpose of the data.



# New Mexico Office of the State Engineer

## Point of Diversion Summary

		(quarters are 1=NW 2=NE 3=SW 4=SE)				(NAD83 UTM in meters)
<b>Well Tag</b>	<b>POD Number</b>	(quarters are smallest to largest)				
		<b>Q64 Q16 Q4 Sec Tws Rng</b>	<b>X</b>	<b>Y</b>		
L	04562	3 1 29 18S 35E	641874	3621315*		

<b>Driller License:</b> 111	<b>Driller Company:</b> BURKE, EDWARD B.	
<b>Driller Name:</b>		
<b>Drill Start Date:</b> 12/20/1960	<b>Drill Finish Date:</b> 12/21/1960	<b>Plug Date:</b> 01/17/1961
<b>Log File Date:</b> 12/29/1960	<b>PCW Rev Date:</b>	<b>Source:</b> Shallow
<b>Pump Type:</b>	<b>Pipe Discharge Size:</b>	<b>Estimated Yield:</b>
<b>Casing Size:</b> 7.00	<b>Depth Well:</b> 156 feet	<b>Depth Water:</b> 95 feet

Water Bearing Stratifications:	Top	Bottom	Description
	98	156	Sandstone/Gravel/Conglomerate

Casing Perforations:	Top	Bottom
	110	154

\*UTM location was derived from PLSS - see Help

The data is furnished by the NMOSE/ISC and is accepted by the recipient with the expressed understanding that the OSE/ISC make no warranties, expressed or implied, concerning the accuracy, completeness, reliability, usability, or suitability for any particular purpose of the data.

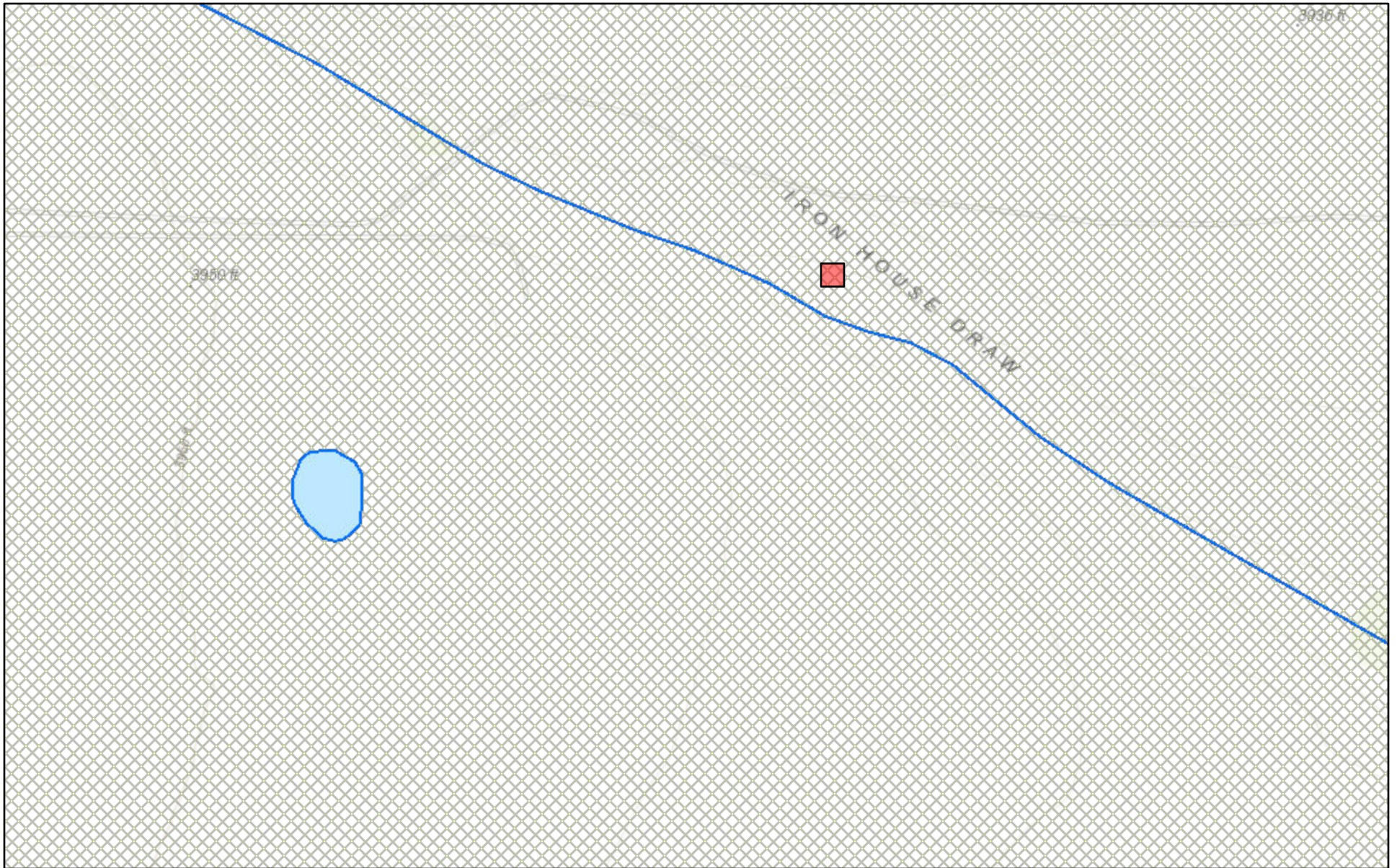


<b>Project Name :</b>	<u>Nighthawk State Com 3H</u>	<b>Date :</b>	<u>Tuesday, August 15, 2023</u>
<b>Project No. :</b>	<u>2090</u>	<b>Sampler :</b>	<u>Jim Hawley</u>
<b>Location :</b>	<u>Lea County, New Mexico</u>	<b>Driller :</b>	<u>H&amp;R Enterprises, LLC</u>
<b>Coordinates :</b>	<u>32.726286°, -103.479090°</u>	<b>Method :</b>	<u>Air Rotary</u>
<b>Elevation (ft) :</b>	<u>3,946</u>		

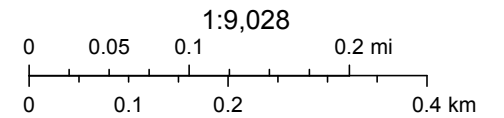
Depth (ft.)	WL	Soil Description	Lithology	Depth (ft.)	WL	Soil Description	Lithology
0		(0') - White medium to small well cemented anugular gravel, with 50% fine, silty, softy loose sand. Dry, no odor, no organics (GM).		50		(50') - White medium to small well cemented angular gravel, with 75% fine, silty, loose, softy sand. Dry, no odor, no organics (GM).	
5		(5') - White fine silty soft loose sand. Dry, no odor, no organics (SM).		55			
10		(10') - White fine silty soft loose sand. Dry, no odor, no organics (SM).		60			
15		(15') - White small to medium well cemented angular gravel, with 50% fine, silty, soft loose sand. Dry, no odor, no organics (GM).		65			
20		(20') - White to light brown fine, silty, soft, loose sand. Dry, no odor, no organics (SM).		70			
25		(25') - White to light brown fine, silty, soft, loose sand. Dry, no odor, no organics (SM).		75			
30		(30') - White to light brown fine, silty, soft, loose sand. Dry, no odor, no organics (SM).		80			
35		(35') - White to light brown fine, silty, soft, loose sand. Dry, no odor, no organics (SM).		85			
40		(40') - White to light brown fine, silty, soft, loose sand. Dry, no odor, no organics (SM).		90			
45		(45') - White to light brown fine, silty, soft, loose sand. Dry, no odor, no organics (SM).		95			
50				105			

Comments : (8/15/23) Boring terminated at 55.0' with no presence of groundwater or moisture. (8/21/23) Bore measured at 55.0' using Heron Groundwater Meter, no detection of moisture inside bore.

# New Mexico NFHL Data



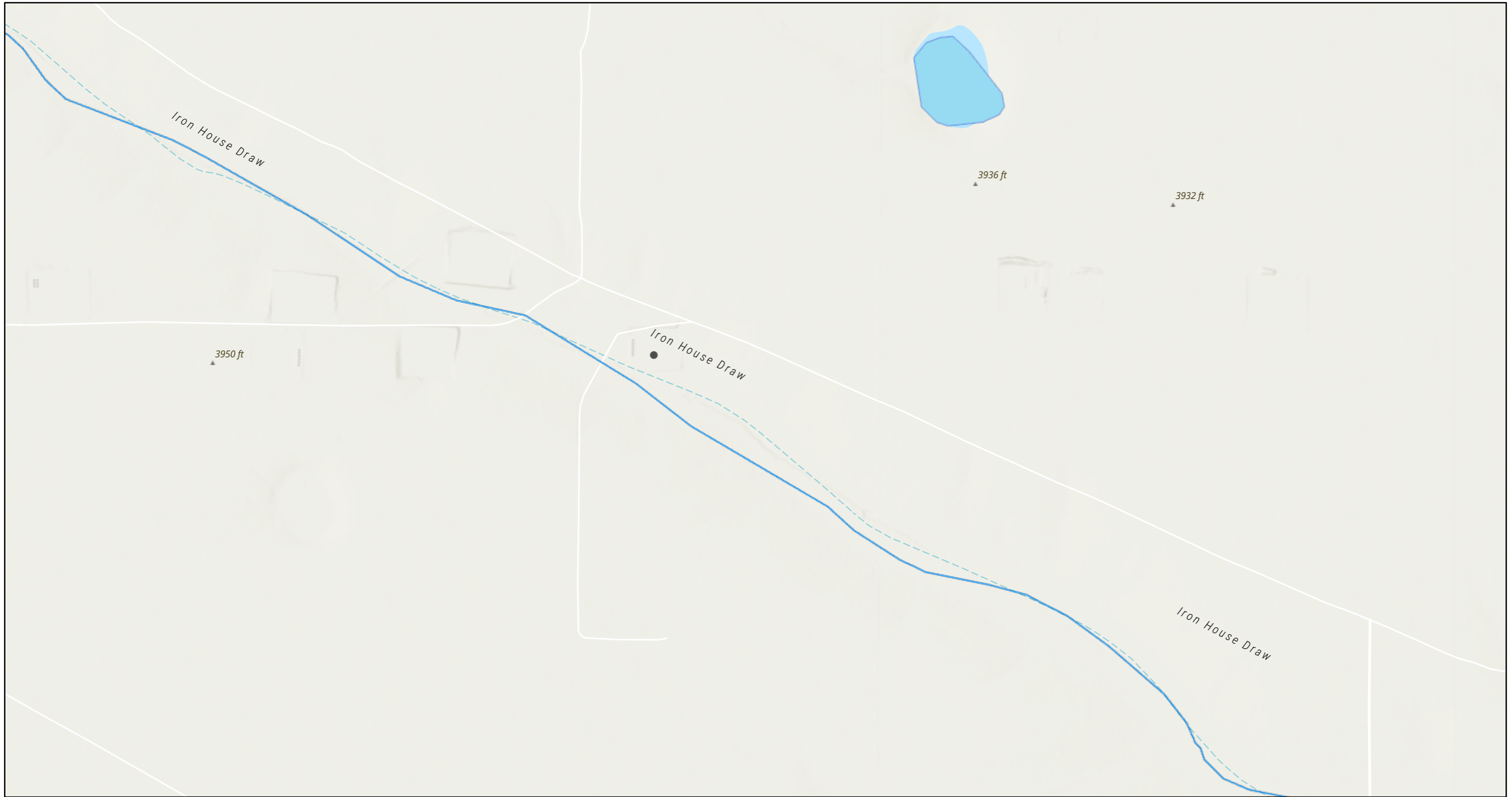
September 17, 2023





FEMA, Sources: Esri, HERE, Garmin, Intermap, increment P Corp., GEBCO, USGS, FAO, NPS, NRCAN, GeoBase, IGN, Kadaster NL, Ordnance Survey,

nmflood.org is made possible through a collaboration with NMDHSEM.  
This is a non-regulatory product for informational use only. Please consult your local floodplain administrator for further information.

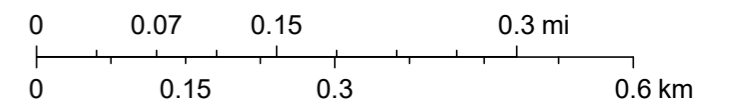
# NIGHTHAWK STATE COM #001H (05.22.2024)



6/2/2024, 6:35:40 PM

-  OSW Water Bodys
-  OSE Streams

1:9,028



Esri, NASA, NGA, USGS, FEMA, Esri Community Maps Contributors, New Mexico State University, Texas Parks & Wildlife, © OpenStreetMap, Microsoft, Esri, TomTom, Garmin, SafeGraph, GeoTechnologies, Inc, METI/NASA, USGS, EPA, NPS, US Census Bureau, USDA, USFWS,