

## Scaled Site Map

# North Hobbs CTB

OCD Facility ID: fJXK1521644806

n Dr

W Mahan Dr

W Mahan Dr

W Mahan Dr

Google Earth

Image © 2024 Airbus



400 ft



# Soil Characteristics

## Lea County, New Mexico

### KN—Kimbrough loam, 0 to 3 percent slopes

#### Map Unit Setting

*National map unit symbol:* 2qmyr

*Elevation:* 2,500 to 4,800 feet

*Mean annual precipitation:* 14 to 16 inches

*Mean annual air temperature:* 57 to 63 degrees F

*Frost-free period:* 180 to 220 days

*Farmland classification:* Not prime farmland

#### Map Unit Composition

*Kimbrough and similar soils:* 85 percent

*Minor components:* 15 percent

*Estimates are based on observations, descriptions, and transects of the mapunit.*

#### Description of Kimbrough

##### Setting

*Landform:* Plains

*Down-slope shape:* Linear

*Across-slope shape:* Linear

*Parent material:* Loamy eolian deposits derived from sedimentary rock

##### Typical profile

*A - 0 to 3 inches:* loam

*Bw - 3 to 10 inches:* loam

*Bkkm1 - 10 to 16 inches:* cemented material

*Bkkm2 - 16 to 80 inches:* cemented material

##### Properties and qualities

*Slope:* 0 to 3 percent

*Depth to restrictive feature:* 4 to 18 inches to petrocalcic

*Drainage class:* Well drained

*Runoff class:* Very high

*Capacity of the most limiting layer to transmit water (Ksat):* Very low to moderately low (0.00 to 0.01 in/hr)

*Depth to water table:* More than 80 inches

*Frequency of flooding:* None

*Frequency of ponding:* None

*Calcium carbonate, maximum content:* 95 percent

*Maximum salinity:* Nonsaline (0.0 to 1.0 mmhos/cm)

*Sodium adsorption ratio, maximum:* 1.0

*Available water supply, 0 to 60 inches:* Very low (about 1.4 inches)

##### Interpretive groups

*Land capability classification (irrigated):* None specified

*Land capability classification (nonirrigated):* 7s

*Hydrologic Soil Group:* D

*Ecological site:* R077DY049TX - Very Shallow 12-17" PZ  
*Hydric soil rating:* No

### **Minor Components**

#### **Eunice**

*Percent of map unit:* 6 percent  
*Landform:* Plains  
*Down-slope shape:* Linear  
*Across-slope shape:* Convex  
*Ecological site:* R077DY049TX - Very Shallow 12-17" PZ  
*Hydric soil rating:* No

#### **Spraberry**

*Percent of map unit:* 5 percent  
*Landform:* Playa rims, plains  
*Down-slope shape:* Convex, linear  
*Across-slope shape:* Linear  
*Ecological site:* R077DY049TX - Very Shallow 12-17" PZ  
*Hydric soil rating:* No

#### **Kenhill**

*Percent of map unit:* 4 percent  
*Landform:* Plains  
*Down-slope shape:* Linear  
*Across-slope shape:* Linear  
*Ecological site:* R077DY038TX - Clay Loam 12-17" PZ  
*Hydric soil rating:* No

## **Data Source Information**

Soil Survey Area: Lea County, New Mexico  
Survey Area Data: Version 21, Sep 3, 2024

## Lea County, New Mexico

### PG—Lovington-Delphos fine sandy loams, 0 to 3 percent slopes

#### Map Unit Setting

*National map unit symbol:* 308qm

*Elevation:* 2,500 to 4,800 feet

*Mean annual precipitation:* 14 to 16 inches

*Mean annual air temperature:* 57 to 63 degrees F

*Frost-free period:* 180 to 220 days

*Farmland classification:* Farmland of statewide importance

#### Map Unit Composition

*Lovington and similar soils:* 45 percent

*Delphos and similar soils:* 40 percent

*Minor components:* 15 percent

*Estimates are based on observations, descriptions, and transects of the mapunit.*

#### Description of Lovington

##### Setting

*Landform:* Playa floors, playa steps

*Down-slope shape:* Concave, convex

*Across-slope shape:* Concave, linear

*Parent material:* Calcareous loamy lacustrine deposits of quaternary age

##### Typical profile

*A - 0 to 10 inches:* fine sandy loam

*Bw - 10 to 19 inches:* clay loam

*Bk1 - 19 to 60 inches:* sandy clay loam

*2Bk2 - 60 to 80 inches:* fine sandy loam

##### Properties and qualities

*Slope:* 0 to 3 percent

*Depth to restrictive feature:* More than 80 inches

*Drainage class:* Well drained

*Runoff class:* Negligible

*Capacity of the most limiting layer to transmit water*

*(Ksat):* Moderately high (0.20 to 0.60 in/hr)

*Depth to water table:* More than 80 inches

*Frequency of flooding:* None

*Frequency of ponding:* None

*Calcium carbonate, maximum content:* 60 percent

*Maximum salinity:* Nonsaline to very slightly saline (0.0 to 2.0 mmhos/cm)

*Sodium adsorption ratio, maximum:* 1.5

*Available water supply, 0 to 60 inches:* High (about 10.2 inches)

### Interpretive groups

*Land capability classification (irrigated): 2s*  
*Land capability classification (nonirrigated): 2s*  
*Hydrologic Soil Group: B*  
*Ecological site: R077DY041TX - Lakebed 12-17" PZ*  
*Hydric soil rating: No*

### Description of Delphos

#### Setting

*Landform: Playa steps, plains*  
*Landform position (two-dimensional): Backslope, footslope*  
*Down-slope shape: Concave, linear*  
*Across-slope shape: Linear*  
*Parent material: Calcareous loamy eolian deposits from the blackwater draw formation of pleistocene age*

#### Typical profile

*A - 0 to 6 inches: fine sandy loam*  
*Bw - 6 to 12 inches: loamy fine sand*  
*2Bk1 - 12 to 29 inches: sandy clay loam*  
*2Bk2 - 29 to 61 inches: fine sandy loam*  
*3Btk - 61 to 80 inches: fine sandy loam*

#### Properties and qualities

*Slope: 0 to 3 percent*  
*Depth to restrictive feature: More than 80 inches*  
*Drainage class: Well drained*  
*Runoff class: Low*  
*Capacity of the most limiting layer to transmit water (Ksat): Moderately high to high (0.57 to 1.98 in/hr)*  
*Depth to water table: More than 80 inches*  
*Frequency of flooding: None*  
*Frequency of ponding: None*  
*Calcium carbonate, maximum content: 40 percent*  
*Maximum salinity: Nonsaline to very slightly saline (0.0 to 2.0 mmhos/cm)*  
*Sodium adsorption ratio, maximum: 2.0*  
*Available water supply, 0 to 60 inches: Moderate (about 8.4 inches)*

### Interpretive groups

*Land capability classification (irrigated): 3e*  
*Land capability classification (nonirrigated): 6e*  
*Hydrologic Soil Group: B*  
*Ecological site: R077DY046TX - Sandy 12-17" PZ*  
*Hydric soil rating: No*

### Minor Components

#### Amarose

*Percent of map unit: 7 percent*  
*Landform: Playa slopes, plains*

*Landform position (two-dimensional):* Backslope, footslope  
*Down-slope shape:* Concave, linear  
*Across-slope shape:* Linear  
*Ecological site:* R077DY047TX - Sandy Loam 12-17" PZ  
*Hydric soil rating:* No

**Lea**

*Percent of map unit:* 5 percent  
*Landform:* Plains, playa slopes  
*Landform position (two-dimensional):* Backslope, footslope  
*Down-slope shape:* Convex, concave, linear  
*Across-slope shape:* Linear  
*Ecological site:* R077DY047TX - Sandy Loam 12-17" PZ  
*Hydric soil rating:* No

**Douro**

*Percent of map unit:* 3 percent  
*Landform:* Plains, playa slopes  
*Landform position (two-dimensional):* Backslope, footslope  
*Down-slope shape:* Linear, concave  
*Across-slope shape:* Linear  
*Ecological site:* R077DY046TX - Sandy 12-17" PZ  
*Hydric soil rating:* No

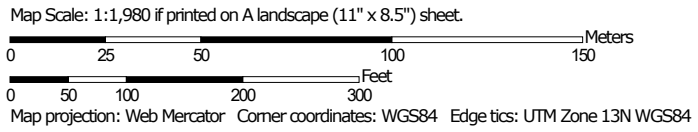
## Data Source Information

Soil Survey Area: Lea County, New Mexico  
Survey Area Data: Version 21, Sep 3, 2024

Soil Map—Lea County, New Mexico




Soil Map may not be valid at this scale.





## MAP LEGEND


### Area of Interest (AOI)

 Area of Interest (AOI)

### Soils

 Soil Map Unit Polygons

 Soil Map Unit Lines

 Soil Map Unit Points

### Special Point Features



Blowout



Borrow Pit



Clay Spot



Closed Depression



Gravel Pit



Gravelly Spot



Landfill



Lava Flow



Marsh or swamp



Mine or Quarry



Miscellaneous Water



Perennial Water



Rock Outcrop



Saline Spot



Sandy Spot



Severely Eroded Spot



Sinkhole



Slide or Slip



Sodic Spot



Spoil Area



Stony Spot



Very Stony Spot



Wet Spot



Other



Special Line Features

### Water Features



Streams and Canals

### Transportation



Rails



Interstate Highways



US Routes



Major Roads



Local Roads

### Background



Aerial Photography

## MAP INFORMATION

The soil surveys that comprise your AOI were mapped at 1:20,000.

Warning: Soil Map may not be valid at this scale.

Enlargement of maps beyond the scale of mapping can cause misunderstanding of the detail of mapping and accuracy of soil line placement. The maps do not show the small areas of contrasting soils that could have been shown at a more detailed scale.

Please rely on the bar scale on each map sheet for map measurements.

Source of Map: Natural Resources Conservation Service

Web Soil Survey URL:

Coordinate System: Web Mercator (EPSG:3857)

Maps from the Web Soil Survey are based on the Web Mercator projection, which preserves direction and shape but distorts distance and area. A projection that preserves area, such as the Albers equal-area conic projection, should be used if more accurate calculations of distance or area are required.

This product is generated from the USDA-NRCS certified data as of the version date(s) listed below.

Soil Survey Area: Lea County, New Mexico

Survey Area Data: Version 21, Sep 3, 2024

Soil map units are labeled (as space allows) for map scales 1:50,000 or larger.

Date(s) aerial images were photographed: Feb 7, 2020—May 12, 2020

The orthophoto or other base map on which the soil lines were compiled and digitized probably differs from the background imagery displayed on these maps. As a result, some minor shifting of map unit boundaries may be evident.



## Map Unit Legend

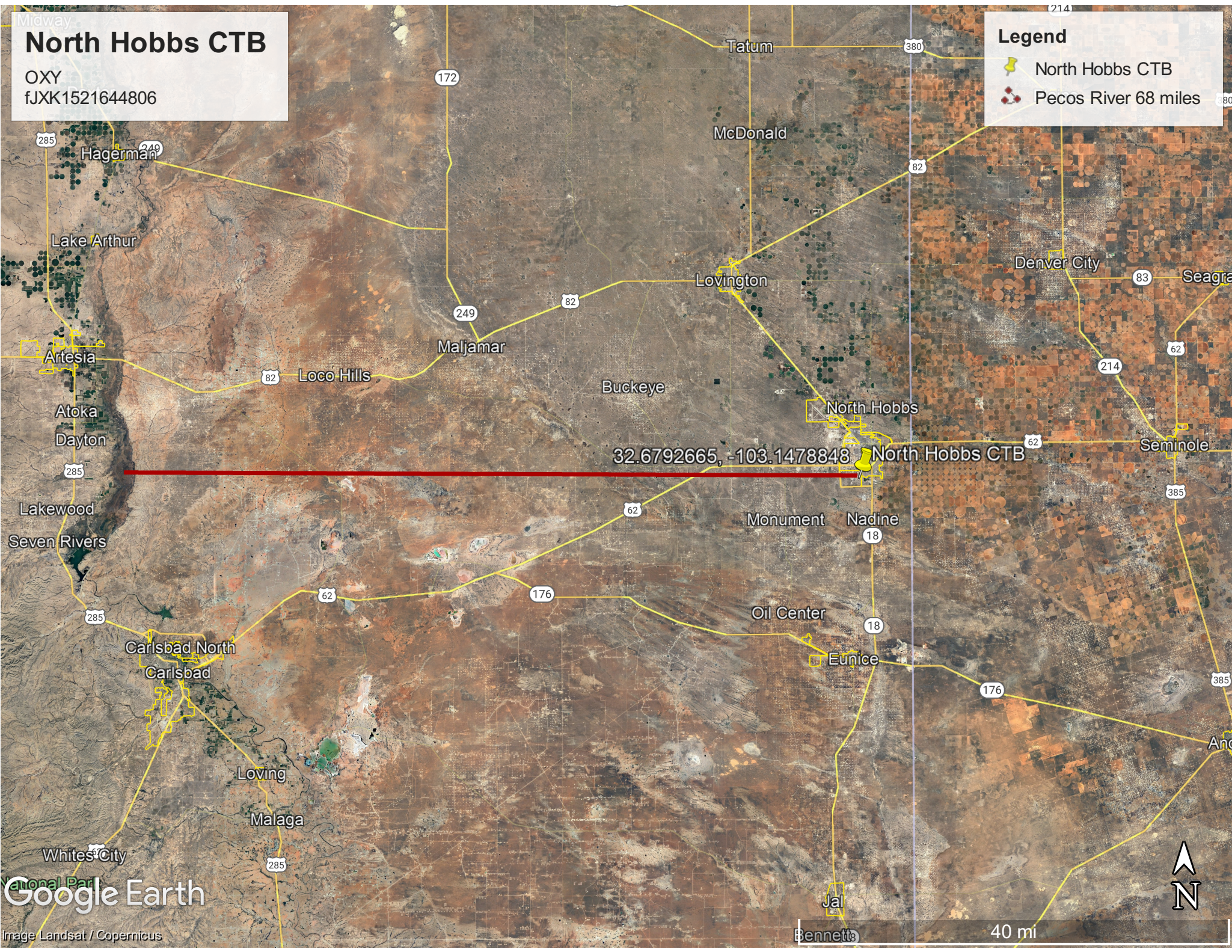
Map Unit Symbol	Map Unit Name	Acres in AOI	Percent of AOI
KN	Kimbrough loam, 0 to 3 percent slopes	0.0	0.3%
PG	Lovington-Delphos fine sandy loams, 0 to 3 percent slopes	15.9	99.7%
<b>Totals for Area of Interest</b>		<b>15.9</b>	<b>100.0%</b>

# Water Course Map

Midway  
**North Hobbs CTB**  
OXY  
fJXK1521644806

**Legend**

-  North Hobbs CTB
-  Pecos River 68 miles



32.6792665, -103.1478848 North Hobbs CTB

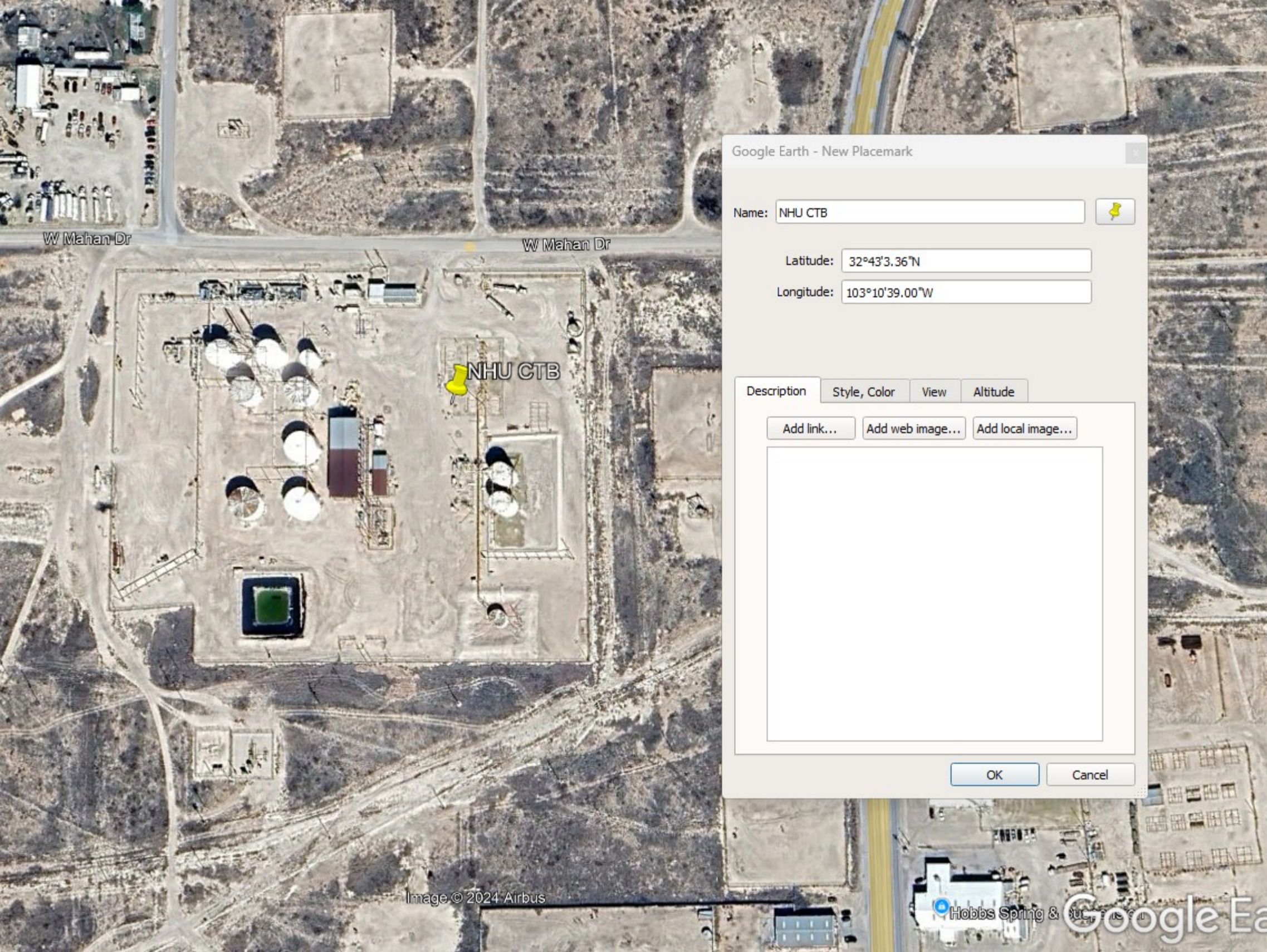
Google Earth

Image Landsat / Copernicus



40 mi

# Depth to Groundwater



W Mahan Dr

W Mahan Dr

NHU CTB

Google Earth - New Placemark

Name:

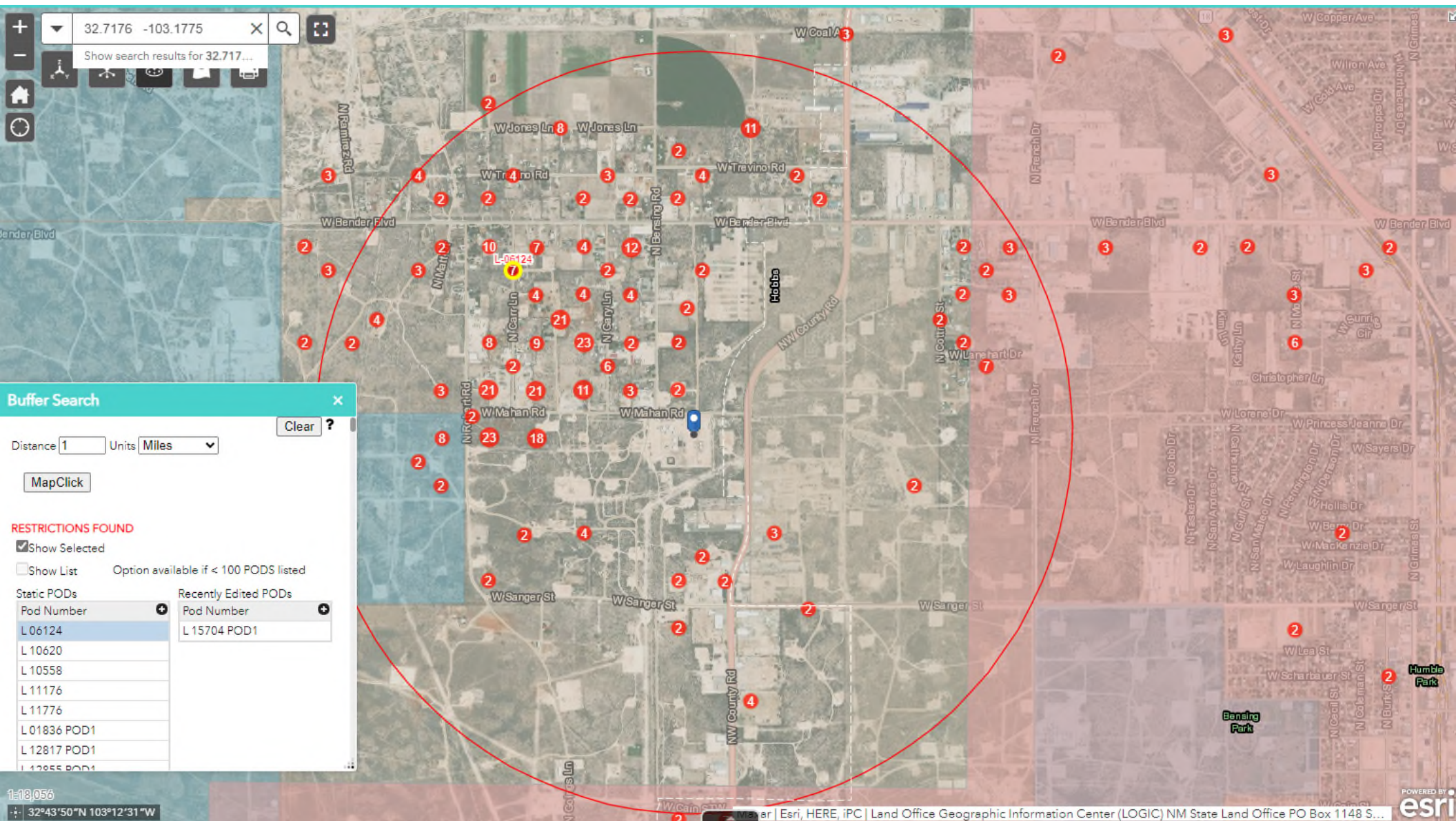


Latitude:

Longitude:

Description

# North Hobbs Unit CTB water wells within 1 mile





# New Mexico Office of the State Engineer

## Water Column/Average Depth to Water

(A CLW##### in the POD suffix indicates the POD has been replaced & no longer serves a water right file.)

(R=POD has been replaced, O=orphaned, C=the file is closed)

(quarters are smallest to largest)

(In feet)

POD Number	Code	Sub basin	County	Q64	Q16	Q4	Sec	Tws	Range	X	Y	Map	Well Depth	Depth Water	Water Column
<a href="#">L 01086</a>		L	LE	NE	NE	NE	29	18S	38E	672136.0	3622259.0 *		61	33	28
<a href="#">L 04547</a>		L	LE	SW	SW	NW	29	18S	38E	670734.0	3621635.0 *		110	70	40
<a href="#">L 06444</a>		L	LE				29	18S	38E	671453.0	3621534.0 *		141	45	96
<a href="#">L 06570</a>		L	LE	SW	SW	SW	29	18S	38E	670749.0	3620830.0 *		112	54	58
<a href="#">L 06717</a>		L	LE		SE	NE	29	18S	38E	672044.0	3621757.0 *		130	55	75
<a href="#">L 06745</a>		L	LE	NW	SW	NW	29	18S	38E	670734.0	3621835.0 *		120	49	71
<a href="#">L 07005</a>		L	LE	NW	SW	SW	29	18S	38E	670749.0	3621030.0 *		150	50	100
<a href="#">L 07017</a>		L	LE		SW	SW	29	18S	38E	670850.0	3620931.0 *		150	60	90
<a href="#">L 07068</a>		L	LE	SW	SW	SW	29	18S	38E	670749.0	3620830.0 *		183	50	133
<a href="#">L 07163</a>		L	LE		NE	NW	29	18S	38E	671231.0	3622146.0 *		110	67	43
<a href="#">L 07427</a>		L	LE		SE	NE	29	18S	38E	672044.0	3621757.0 *		130	60	70
<a href="#">L 07432 POD1</a>		L	LE		SE	NE	29	18S	38E	672044.0	3621757.0 *		125	55	70
<a href="#">L 07434</a>		L	LE	SE	SE	NE	29	18S	38E	672143.0	3621656.0 *		125	55	70
<a href="#">L 07528</a>		L	LE	SE	NW	SE	29	18S	38E	671747.0	3621246.0 *		380		
<a href="#">L 07530</a>		L	LE	SE	NE	NW	29	18S	38E	671330.0	3622045.0 *		370		
<a href="#">L 07531</a>		L	LE	NW	SW	NW	29	18S	38E	670734.0	3621835.0 *		370		
<a href="#">L 07570</a>		L	LE		SW	SW	29	18S	38E	670850.0	3620931.0 *		122	48	74
<a href="#">L 07628</a>		L	LE	NW	NE	NE	29	18S	38E	671936.0	3622259.0 *		135	70	65
<a href="#">L 07673</a>		L	LE	NE	NE	NE	29	18S	38E	672136.0	3622259.0 *		125	50	75
<a href="#">L 07754</a>		L	LE	SE	NE	NE	29	18S	38E	672136.0	3622059.0 *		207	50	157
<a href="#">L 07825</a>		L	LE	NW	NE	NE	29	18S	38E	671936.0	3622259.0 *		105	45	60
<a href="#">L 07825 POD2</a>		L	LE	NW	NE	NE	29	18S	38E	671918.2	3622279.2		220	90	130
<a href="#">L 07826</a>		L	LE	SW	NE	NE	29	18S	38E	671936.0	3622059.0 *		110	45	65
<a href="#">L 07839</a>		L	LE		SE	NE	29	18S	38E	672044.0	3621757.0 *		120	60	60
<a href="#">L 08131</a>		L	LE			SW	29	18S	38E	671051.0	3621132.0 *		110	60	50
<a href="#">L 08135</a>		L	LE		SE	NE	29	18S	38E	672044.0	3621757.0 *		130	62	68

(A CLW##### in the  
POD suffix indicates  
the POD has been  
replaced  
& no longer serves a  
water right file.)

(R=POD has  
been  
replaced,  
O=orphaned,  
C=the file is  
closed)

(quarters are smallest  
to largest)

(In feet)


POD Number	Code	Sub basin	County	Q64	Q16	Q4	Sec	Tws	Range	X	Y	Map	Well Depth	Depth Water	Water Column
<a href="#">L 08191</a>		L	LE	NE	NE	NE	29	18S	38E	672136.0	3622259.0 *		120	120	0
<a href="#">L 08228</a>		L	LE	SE	NE	NE	29	18S	38E	672136.0	3622059.0 *		115	68	47
<a href="#">L 08229</a>		L	LE	NW	SE	NE	29	18S	38E	671943.0	3621856.0 *		115	68	47
<a href="#">L 08362</a>		L	LE		NW	SW	29	18S	38E	670842.0	3621334.0 *		187	48	139
<a href="#">L 08370</a>		L	LE	SE	NE	NE	29	18S	38E	672136.0	3622059.0 *		120	60	60
<a href="#">L 08429</a>		L	LE	NE	NW	SE	29	18S	38E	671747.0	3621446.0 *		120	62	58
<a href="#">L 08448</a>		L	LE	NW	SE	NE	29	18S	38E	671943.0	3621856.0 *		130	38	92
<a href="#">L 08737</a>		L	LE		SE	NE	29	18S	38E	672044.0	3621757.0 *		132	60	72
<a href="#">L 08860</a>		L	LE			NE	29	18S	38E	671842.0	3621951.0 *		130	39	91
<a href="#">L 08867</a>		L	LE		NE	NE	29	18S	38E	672037.0	3622160.0 *		120	52	68
<a href="#">L 09586</a>		L	LE		SE	NE	29	18S	38E	672044.0	3621757.0 *		120	78	42
<a href="#">L 09682</a>		L	LE	SW	NE	NE	29	18S	38E	671936.0	3622059.0 *		120	45	75
<a href="#">L 09705</a>		L	LE	SE	SW	SW	29	18S	38E	670949.0	3620830.0 *		135	65	70
<a href="#">L 09777</a>		L	LE			NW	29	18S	38E	671036.0	3621937.0 *		150	84	66
<a href="#">L 09792</a>		L	LE		NW	NW	29	18S	38E	670828.0	3622139.0 *		150	42	108
<a href="#">L 10860</a>		L	LE		NW	NW	29	18S	38E	670828.0	3622139.0 *		160	39	121
<a href="#">L 11171</a>		L	LE	NW	SE	SW	29	18S	38E	671152.0	3621037.0 *		206		
<a href="#">L 11176</a>		L	LE	SE	NW	SE	29	18S	38E	671747.0	3621246.0 *		220	65	155
<a href="#">L 11365</a>		L	LE	SE	SE	NW	29	18S	38E	671337.0	3621642.0 *		120	55	65
<a href="#">L 11886 POD1</a>		L	LE	SE	SW	SW	29	18S	38E	670949.0	3620830.0 *		172		
<a href="#">L 12052 POD1</a>		L	LE	NE	SE	NE	29	18S	38E	672150.5	3621825.1		218		
<a href="#">L 12068 POD1</a>		L	LE	NE	SE	NE	29	18S	38E	672190.1	3621798.0		160		
<a href="#">L 12161 POD1</a>		L	LE	NW	NE	NE	29	18S	38E	671848.5	3622272.7		195		
<a href="#">L 12304 POD1</a>		L	LE	NE	SE	NE	29	18S	38E	672140.2	3621821.8		155		
<a href="#">L 12874 POD1</a>		L	LE	NE	SW	SW	29	18S	38E	671030.7	3621066.3		175		
<a href="#">L 13750 POD2</a>		L	LE	SW	SW	NE	29	18S	38E	671526.4	3621651.9		300		
<a href="#">L 13997 POD1</a>		L	LE	NE	SE	SW	29	18S	38E	671343.3	3621125.0		109	62	47
<a href="#">L 14213 POD1</a>		L	LE	SW	SW	NE	29	18S	38E	671610.3	3621586.8		215	63	152
<a href="#">L 14492 POD1</a>		L	LE	NE	SW	SW	29	18S	38E	670985.4	3621126.5		203	100	103

(A CLW##### in the  
POD suffix indicates  
the POD has been  
replaced  
& no longer serves a  
water right file.)

(R=POD has  
been  
replaced,  
O=orphaned,  
C=the file is  
closed)

(quarters are smallest  
to largest)

(In feet)

POD Number	Code	Sub basin	County	Q64	Q16	Q4	Sec	Tws	Range	X	Y	Well Map	Depth	Water	Water Column
<a href="#">L 14714 POD1</a>		L	LE	SW	NW	NW	29	18S	38E	670765.5	3621979.8		180	120	60

Average Depth to Water: **60 feet**

Minimum Depth: **33 feet**

Maximum Depth: **120 feet**

---

**Record Count:** 56

**Basin/County Search:**

**County:** LE

**PLSS Search:**

**Range:** 38E

**Township:** 18S

**Section:** 29

\* UTM location was derived from PLSS - see Help

---

The data is furnished by the NMOSE/ISC and is accepted by the recipient with the expressed understanding that the OSE/ISC make no warranties, expressed or implied, concerning the accuracy, completeness, reliability, usability, or suitability for any particular purpose of the data.

---